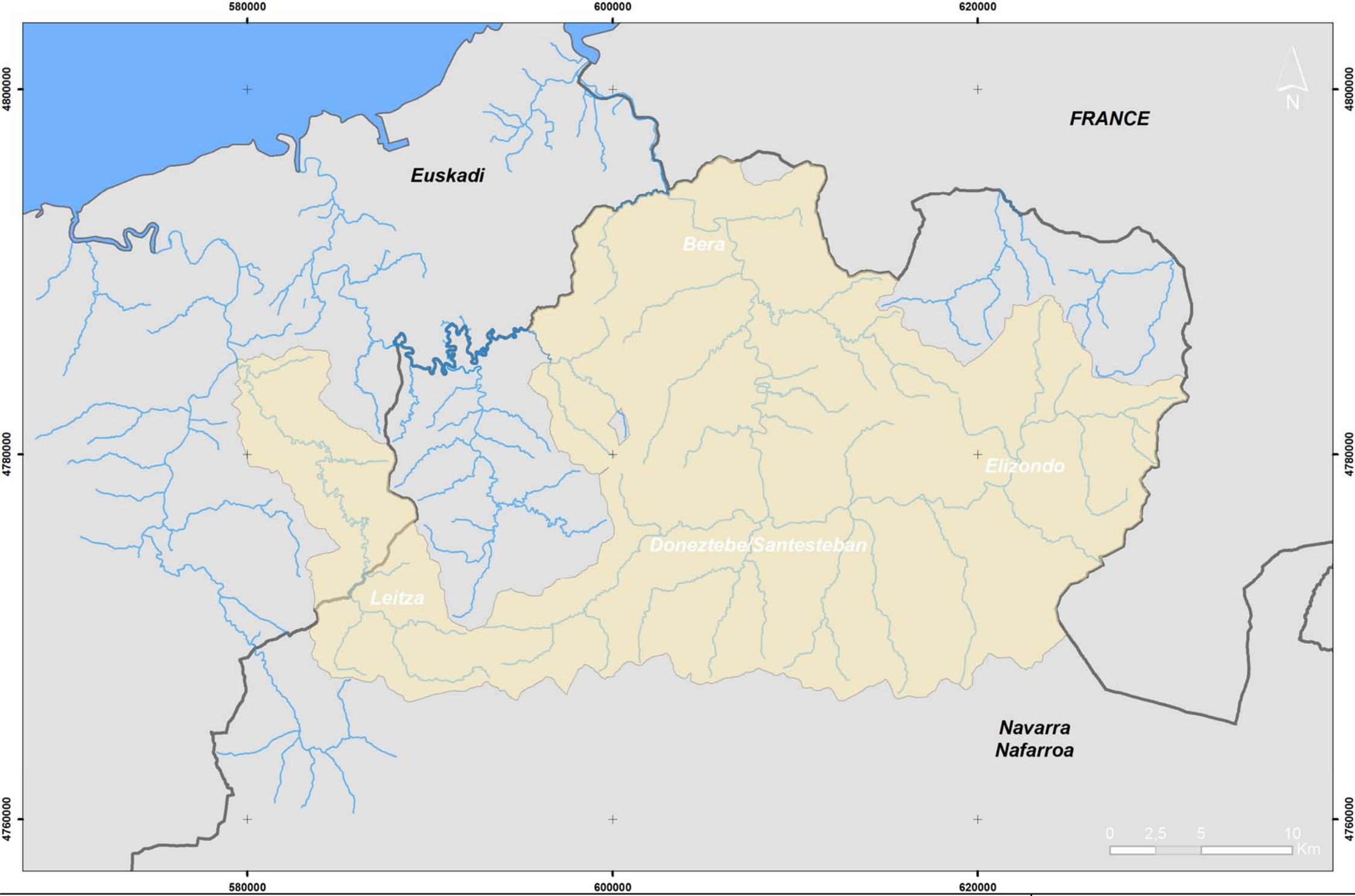


ACTION NAME <b>D4 Socio-economic follow-up</b>
SCZ in which the action is undertaken
All those included in the project.
<b>LINK WITH NATURA 2000</b>
The effects of the project on the local socio-economy are not directly related to Natura 2000, though it is important to consider that many ecosystems depend on socio-economic uses. For example, the harvested meadows next to rivers are only maintained if there are live-stock available to use the grass for pasture, in which case they are preserved.
<b>Key Elements of the promoted SCZ</b>
<b>PLACE OF ACTION AND MUNICIPALS:</b>
Complete field of the project
<b>Date</b>
Project execution duration
<b>Budget</b>
0€ (follow-up included in the normal administrative tasks of the project).
<b>Related project actions (follow-up)</b>
All the project actions (preparatory, preservation, follow-up, communication and coordination).
<b>Description of the action - OBJECTIVES</b>
The aim of this action is to assess the contribution of the project to the socio-economic system.
<b>Description of the action - BACKGROUND</b>
It is worth knowing the amount of project investments and expenses that will be directly applied to the territory, in which fields (regional, provincial, local), as well as their capacity to generate new economic or labour activity. Knowing the magnitude and directionality of these possible impacts will provide a wider view of all the project effects.
<b>Description of the action - ENVISAGED ACTIONS/DESCRIPTION OF FOLLOW UP</b>
Follow-up will be performed by accounting all the investments and expenses depending on their real application in the municipals of the project's area of socio-economic influence (local field) or outside (provincial and regional fields). As such, upon finishing the project it will be possible to analyse the proportion that has been reinvested back into local agents, as well as the contribution made to the creation and sustaining of employment.
<b>JUSTIFICATION What are the desired results? - ENVISAGED RESULTS</b>
The envisaged result is to discover the proportion of local and regional investments of the project.



Gipuzkoako Foru Aldundia



Diputación Foral de Gipuzkoa



EUSKO JAURLARITZA GOBIERNO VASCO

Nafarroako Gobernua



Gobierno de Navarra

Nafarroako Ingurumen Kudeaketa, S.A.



Gestión Ambiental de Navarra, S.A.